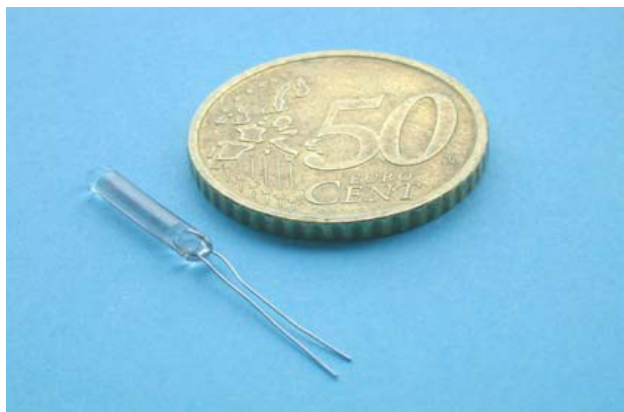


Platinum Sensors



Glass Wire Wound Platinum RTD Element

Type GO
(-200°C to +400°C)

| | |
|---------------------------|---|
| DESIGN | One or two platinum bands are wound on a solid glass core and homogenously sealed with an external glass tube. The lead wires connection is pull up force resistant. |
| APPLICATIONS | <ul style="list-style-type: none">- Chemical and pharmaceutical industries- Food industry- H.V.A.C.- Power generation plants- Analytical equipment- Aerospace industry- Marine industry |
| SPECIAL FEATURES | <ul style="list-style-type: none">- Small dimensions- Good temperature stability- Abrasion resistant- Resistance to aggressive environments (acid, oil, solvent etc)- High vibration resistance |
| NOMINAL RESISTANCE | <ul style="list-style-type: none">- 100 Ω at 0°C- Temperature coefficient $\alpha = 3850$ ppm/K |
| TOLERANCE CLASS | <ul style="list-style-type: none">- DIN EN 60751 : class B (W 0.3), A (W 0.15) and 1/3B (W0.1)- Closer tolerances in restricted temperature range |
| TEMPERATURE RANGE | <ul style="list-style-type: none">- From -200°C to +400°C |
| CONNECTION WIRES | <ul style="list-style-type: none">- Platinum coated nickel wires |
| HOUSING | <ul style="list-style-type: none">- Can be used in most liquids without protection |
| STABILITY | <ul style="list-style-type: none">- High vibration resistant- Resistant to external forces and pressures |
| OPTIONS | <ul style="list-style-type: none">- Connection wire length- Extension cable in 2, 3 or 4 wire connection- Extended glass body of various diameters and shapes- Other nominal resistance values |

Attention : All technical data and recommendations concerning the products and services of our firm are for information purposes only. No data given in our datasheets guarantee particular properties to any products. They represent values obtained by experience and are intended as guidelines only. We reserve the right to make alterations to illustrations and technical data printed as a result of on-going development.

UK Version 02/12 - Page 1 of 2

Supplied by

Platinum Sensors Ltd, 6 Drakeleys Field, Milland, Liphook, GU30 7NH, England

Tel: (44) 01428 741255 Fax: (44) 01428 741225 sales@platinumsensors.co.uk www.platinumsensors.co.uk

Platinum Sensors

Glass Wire Wound Platinum RTD Element

Type GO (-200°C to +400°C)

| Type | Model | Part Number | Nominal Resistance (Ohms at 0°C) | L | WL | D | AL1 | AL2 | A | Self Heating (in still air) (K/mW) | Response Time (seconds) | | | |
|------|-------|-------------|---|---|----|---|-----|-----|---|--|----------------------------|-------|------------------|-------|
| | | | | | | | | | | | Water V = 0.4m/s | | Air V = 1 m/s | |
| | | | | | | | | | | | t 0.5 | t 0.9 | t 0.5 | t 0.9 |

Tolerance Class B (W 0.3) From -196°C to +400°C

| | | | | | | | | | | | | | | |
|---------|--------|--------|-----|----|-----|-----|----|----|------|------|------|------|----|----|
| 1Pt 100 | GO1020 | SB0789 | 100 | 10 | 6 | 2.0 | 15 | - | 0.25 | 0.26 | 0.14 | 0.35 | 7 | 21 |
| 1Pt 100 | GO1327 | SB0865 | 100 | 13 | 9 | 2.7 | 15 | - | 0.25 | 0.11 | 0.40 | 1.30 | 13 | 25 |
| 1Pt 100 | GO1545 | SB0862 | 100 | 15 | 9.5 | 4.5 | 15 | - | 0.25 | 0.09 | 0.80 | 2.40 | 16 | 40 |
| 1Pt 100 | GO2327 | SB0870 | 100 | 23 | 16 | 2.7 | 15 | - | 0.25 | 0.11 | 0.40 | 1.30 | 13 | 25 |
| 1Pt 100 | GO3045 | SB0873 | 100 | 30 | 21 | 4.5 | 15 | - | 0.25 | 0.09 | 0.80 | 2.40 | 16 | 40 |
| 2Pt 100 | GO4845 | SB0765 | 100 | 48 | 35 | 4.5 | 10 | 12 | 0.25 | 0.09 | 0.80 | 2.40 | 16 | 40 |

Tolerance Class A (W 0.15) From -100°C to +250°C

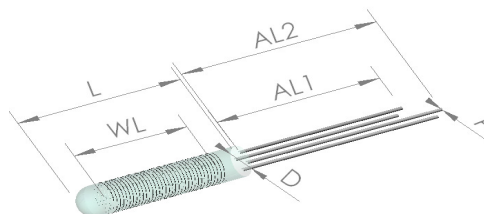
| | | | | | | | | | | | | | | |
|---------|--------|--------|-----|----|-----|-----|----|---|------|------|------|------|----|----|
| 1Pt 100 | GO1020 | SB0794 | 100 | 10 | 6 | 2.0 | 15 | - | 0.25 | 0.26 | 0.14 | 0.35 | 7 | 21 |
| 1Pt 100 | GO1327 | SB0866 | 100 | 13 | 9 | 2.7 | 15 | - | 0.25 | 0.11 | 0.40 | 1.30 | 13 | 25 |
| 1Pt 100 | GO1545 | SB0863 | 100 | 15 | 9.5 | 4.5 | 15 | - | 0.25 | 0.09 | 0.80 | 2.40 | 16 | 40 |
| 1Pt 100 | GO2327 | SB0871 | 100 | 23 | 16 | 2.7 | 15 | - | 0.25 | 0.11 | 0.40 | 1.30 | 13 | 25 |
| 1Pt 100 | GO3045 | SB0874 | 100 | 30 | 21 | 4.5 | 15 | - | 0.25 | 0.09 | 0.80 | 2.40 | 16 | 40 |

Tolerance Class 1/3B (W 0.1) From 0°C to +150°C

| | | | | | | | | | | | | | | |
|---------|--------|--------|-----|----|-----|-----|----|---|------|------|------|------|----|----|
| 1Pt 100 | GO1020 | SB0795 | 100 | 10 | 6 | 2.0 | 15 | - | 0.25 | 0.26 | 0.14 | 0.35 | 7 | 21 |
| 1Pt 100 | GO1327 | SB0867 | 100 | 13 | 9 | 2.7 | 15 | - | 0.25 | 0.11 | 0.40 | 1.30 | 13 | 25 |
| 1Pt 100 | GO1545 | SB0864 | 100 | 15 | 9.5 | 4.5 | 15 | - | 0.25 | 0.09 | 0.80 | 2.40 | 16 | 40 |
| 1Pt 100 | GO2327 | SB0872 | 100 | 23 | 16 | 2.7 | 15 | - | 0.25 | 0.11 | 0.40 | 1.30 | 13 | 25 |
| 1Pt 100 | GO3045 | SB0875 | 100 | 30 | 21 | 4.5 | 15 | - | 0.25 | 0.09 | 0.80 | 2.40 | 16 | 40 |

DIMENSIONAL TOLERANCES

- L (length of body) = +/- 2 mm
- D (diameter of body) = +/- 0.2 mm
- AL (connection wire length) = +/- 2 mm
- A (connection wire diameter) = +/- 0.02 mm



Attention : All technical data and recommendations concerning the products and services of our firm are for information purposes only. No data given in our datasheets guarantee particular properties to any products. They represent values obtained by experience and are intended as guidelines only. We reserve the right to make alterations to illustrations and technical data printed as a result of on-going development.

UK Version 02/12 - Page 2 of 2

Supplied by

Platinum Sensors Ltd, 6 Drakeleys Field, Milland, Liphook, GU30 7NH, England

Tel: (44) 01428 741255 Fax: (44) 01428 741225 sales@platinumsensors.co.uk www.platinumsensors.co.uk